

VT series HMI installation guide



Overseas Technical support Department

1. VT series HMI appearance



2. Unpack VT Designer file

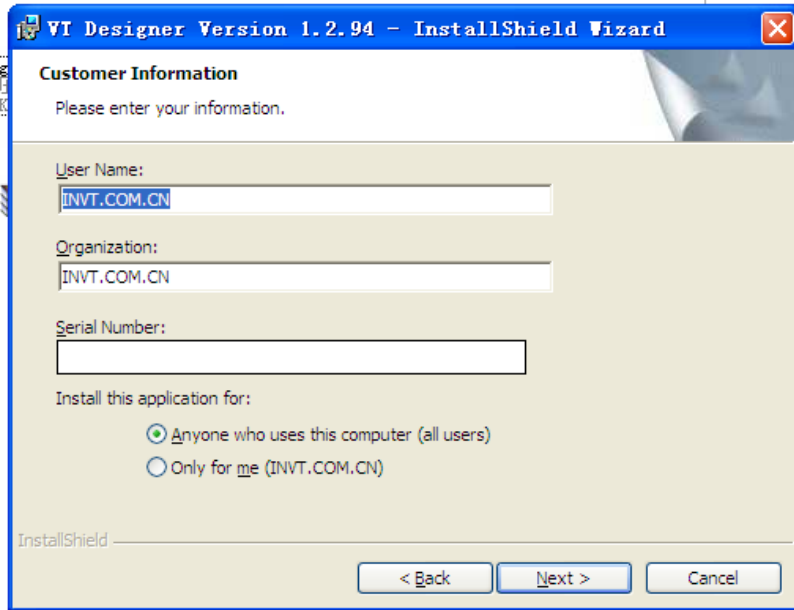


3. Double-click the setup file



4. Click the next button; it will prompt you to fill out the serial number.

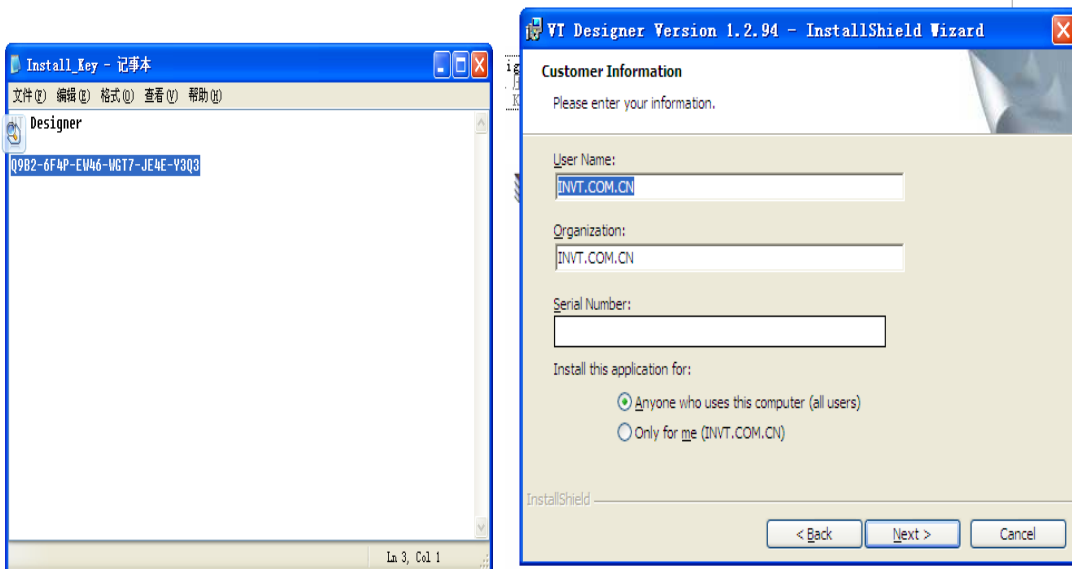
The serial number can be found in the Unpack VT Designer files.



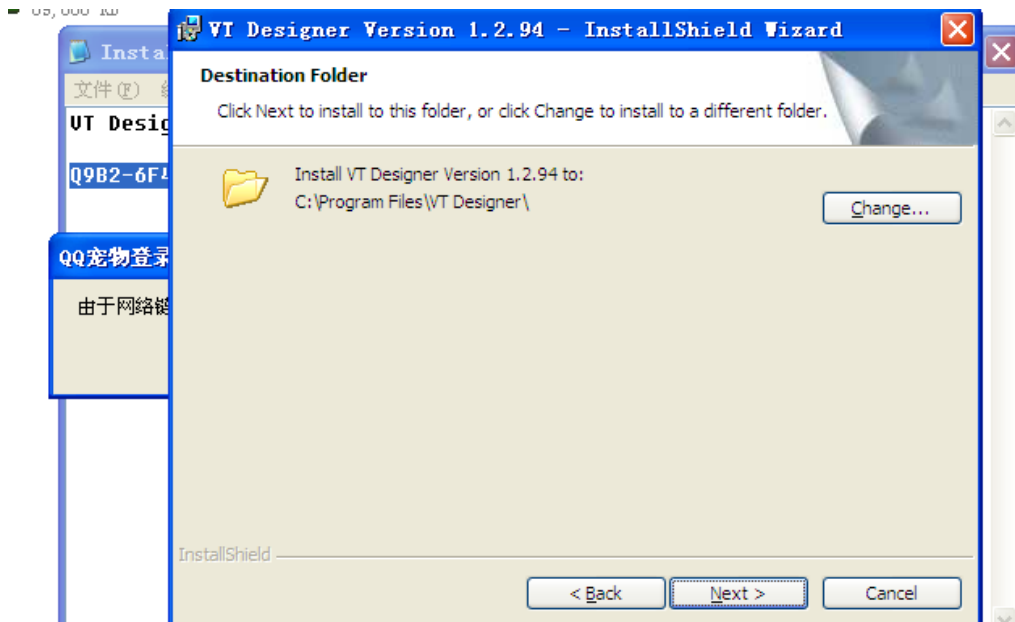
5. Unpack VT Designer files contain an Install Key file, open it.




6. Copy the serial number.



7. Click the Next button.



8. Then click the finish button. You can find the  in your computer desktop.