

VT series HMI program upload/download guide

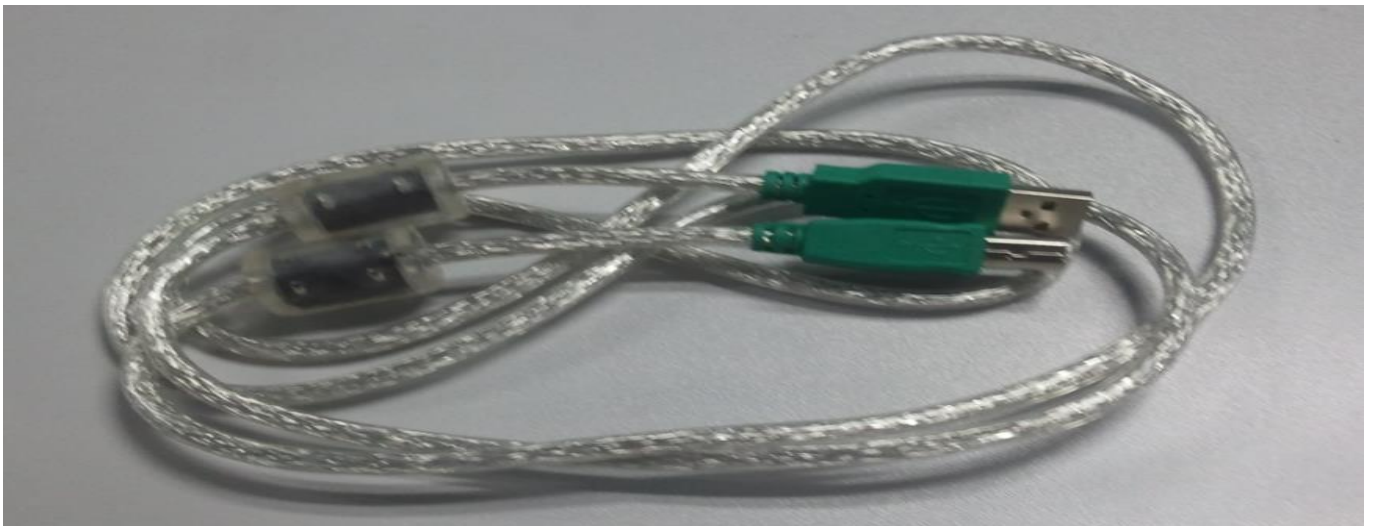


Overseas Technical support Department

1. VT series HMI appearance



2. Communication cable with computer.



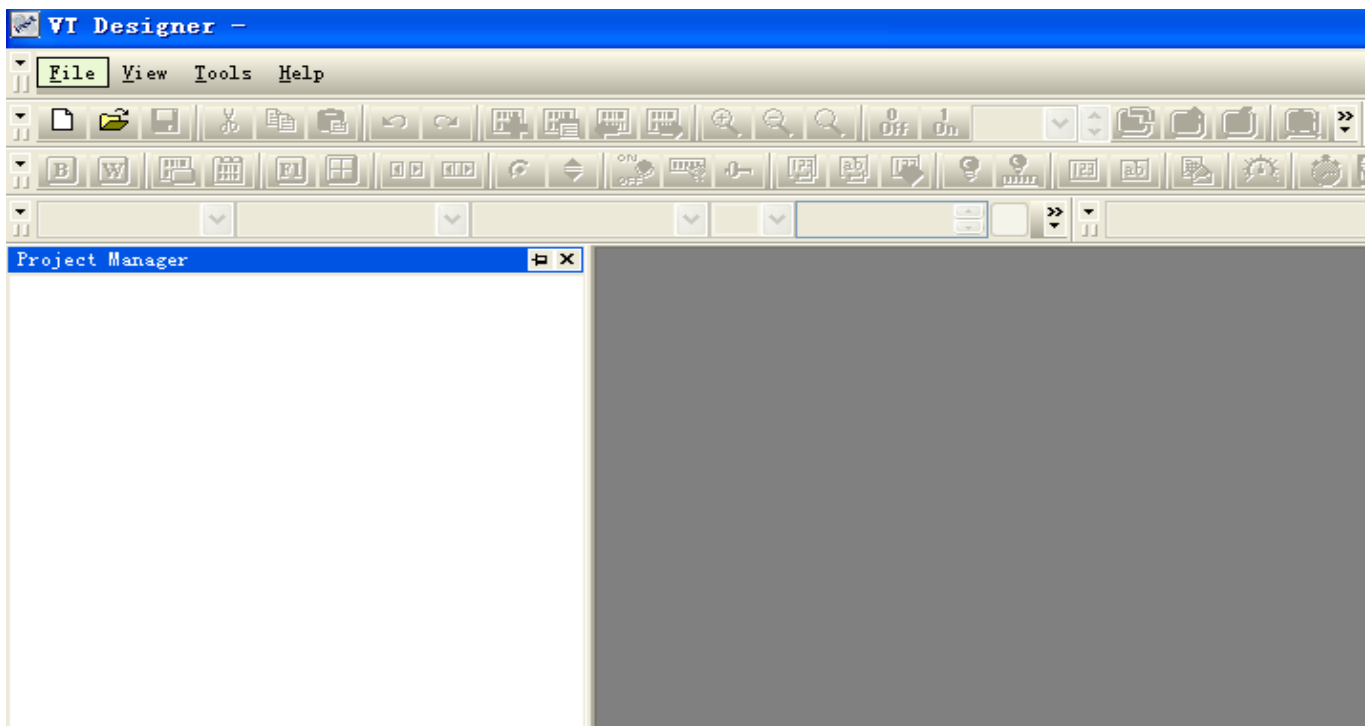
3. Connect to the computer



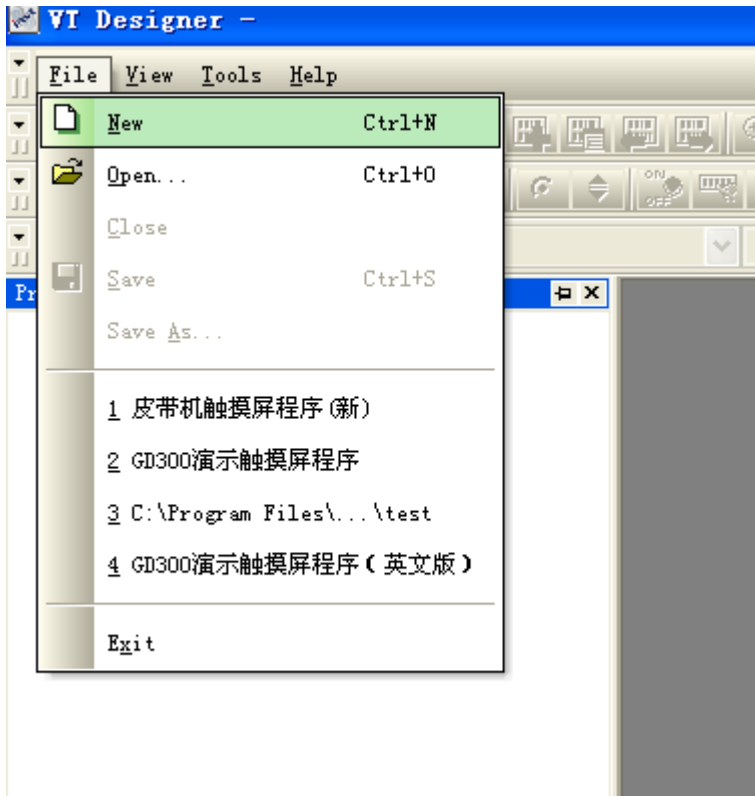
4. Open the VT Designer software



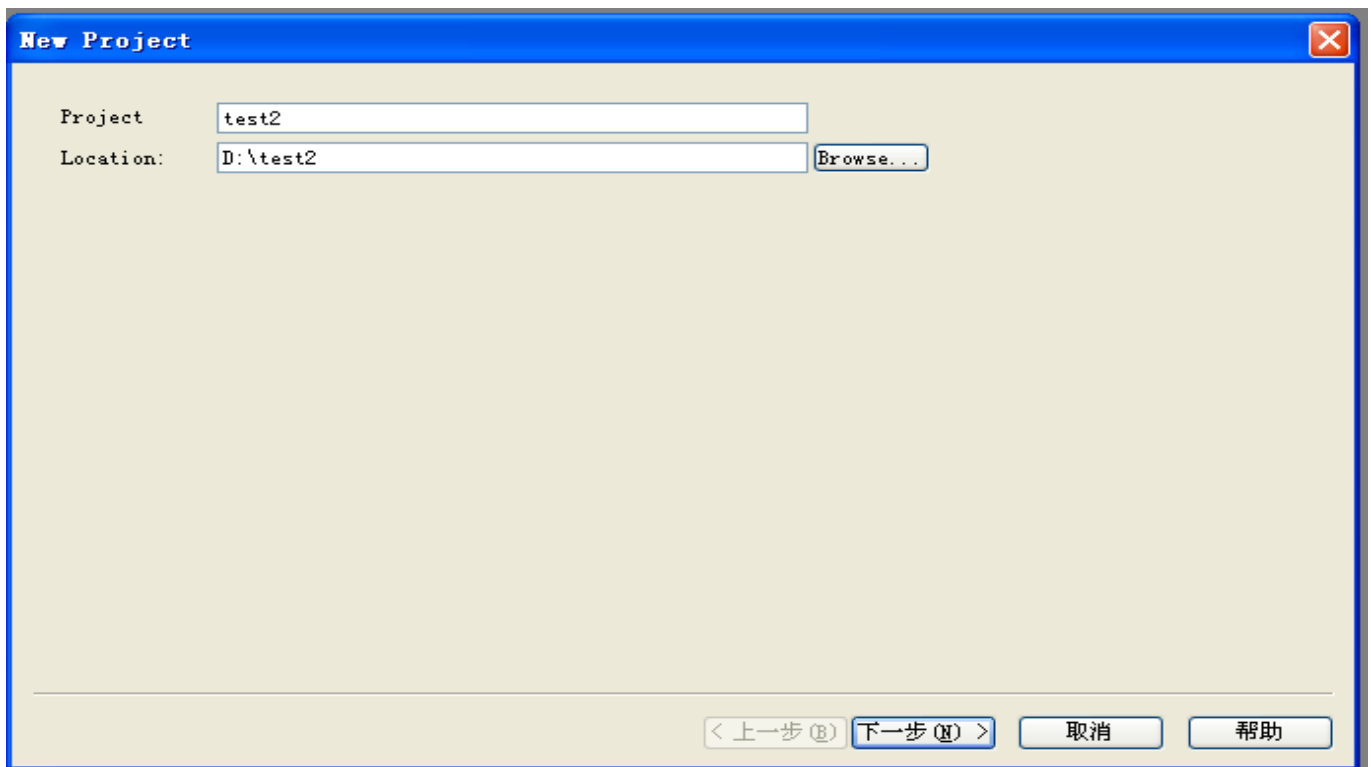
5. The VT Designer's interface



6. Found a new file.



7. Fill the file's name and save path in the disk. Then click next.



8. Fill the new panel application. Take 10 inch HMI for example. Click next.

New Panel Application

Application: AP_1

Display: 10.0~10.4"

Display: Landscape

Model: VT104 (800x600)

Display: 800 x 600

< 上一步(B) **下一步(N) >** 取消 帮助

9. Fill the link details. Click finished.

New Link

Link: 1

Link Name: Link 1

Link Type: Direct Link (COM)

Device/Server: Invt Auto-Control Techno IVC Series

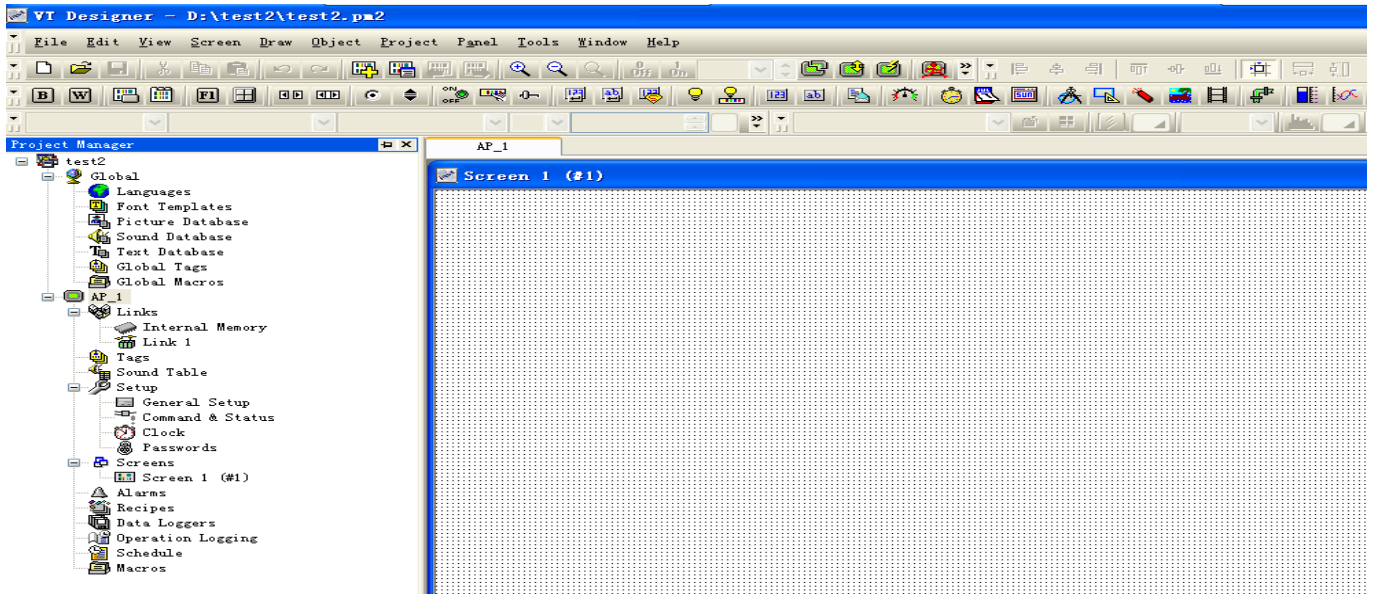
Link Port: COM1 Sub-links

Record communication status in operat

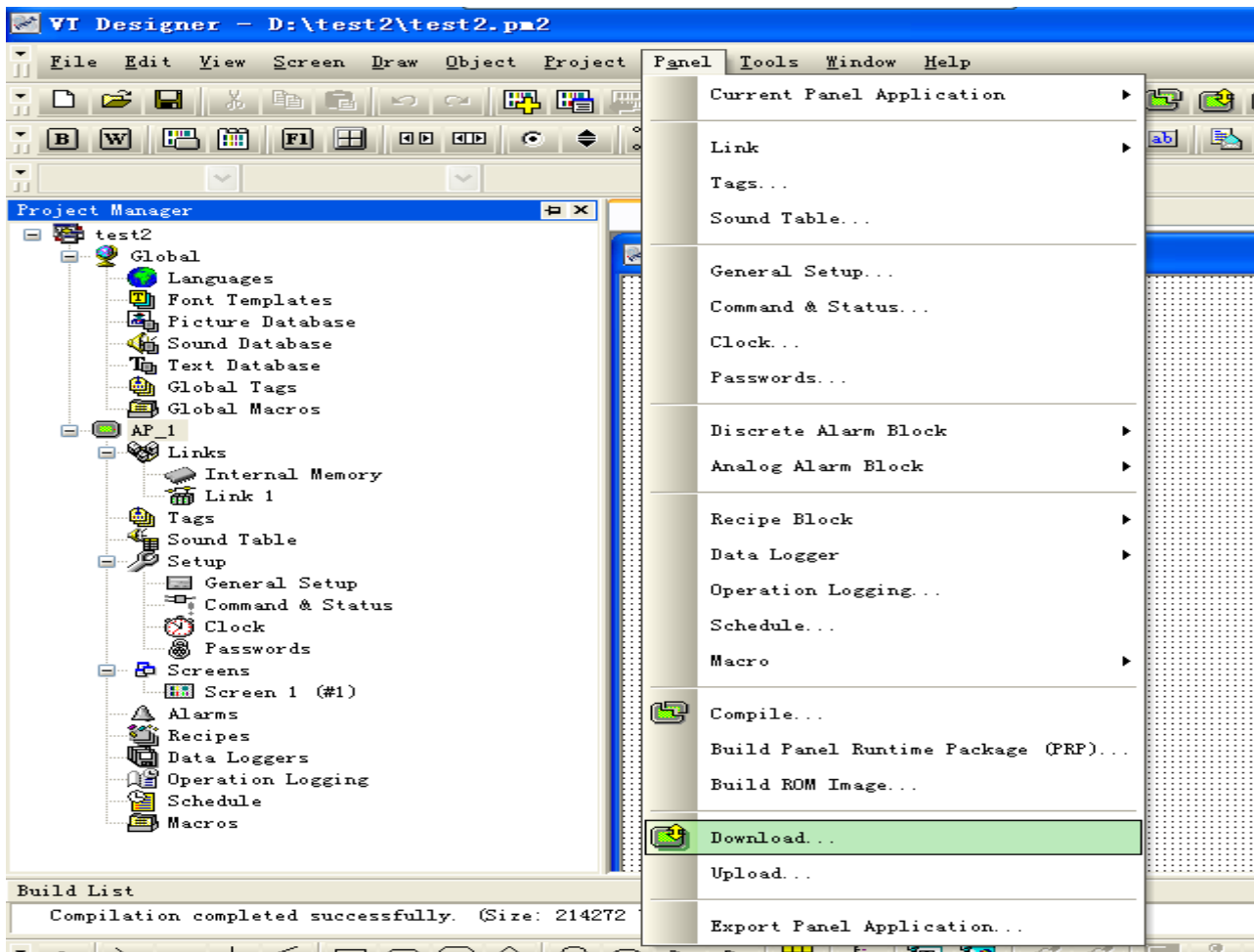
The duration of showing a communication error: 5 second(s)

< 上一步(B) **完成** 取消 帮助

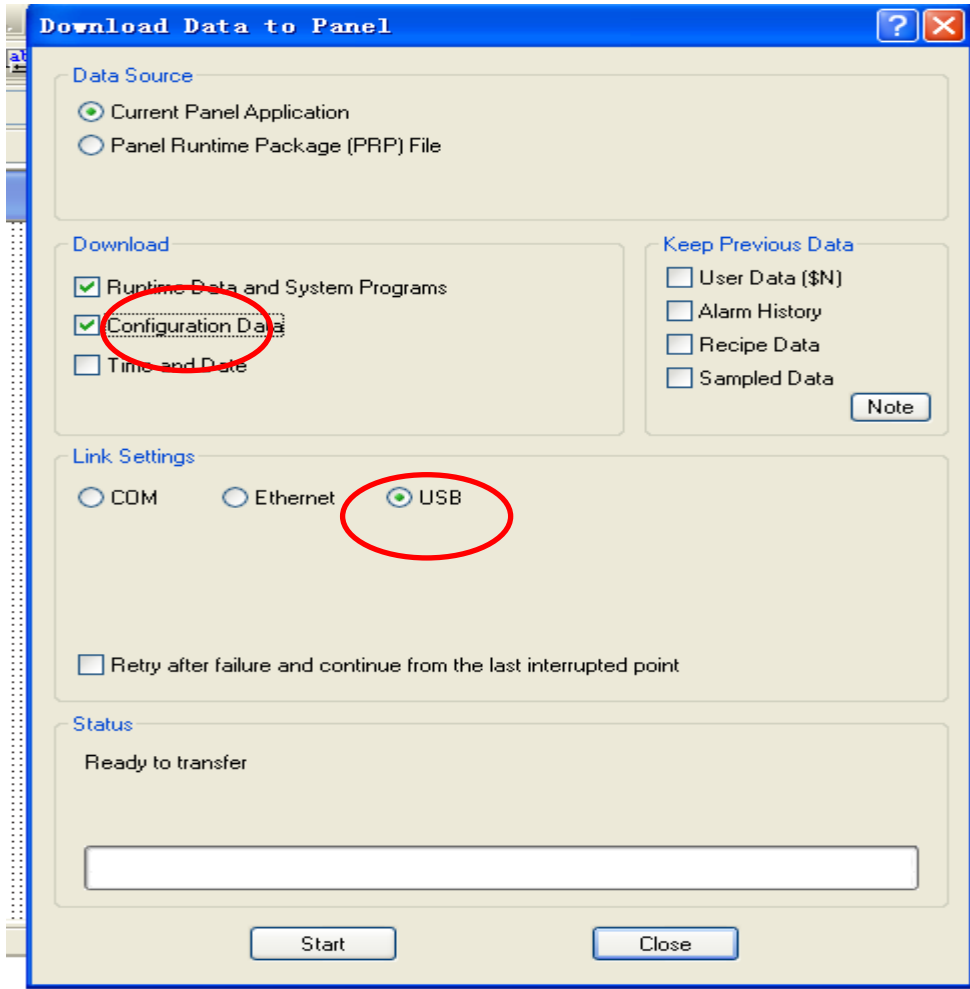
10. The new file we found.



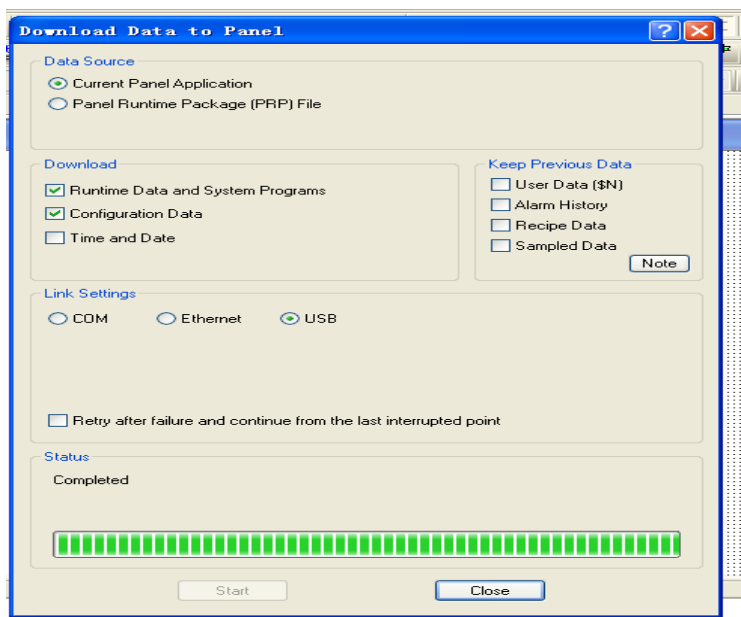
11. Click panel download



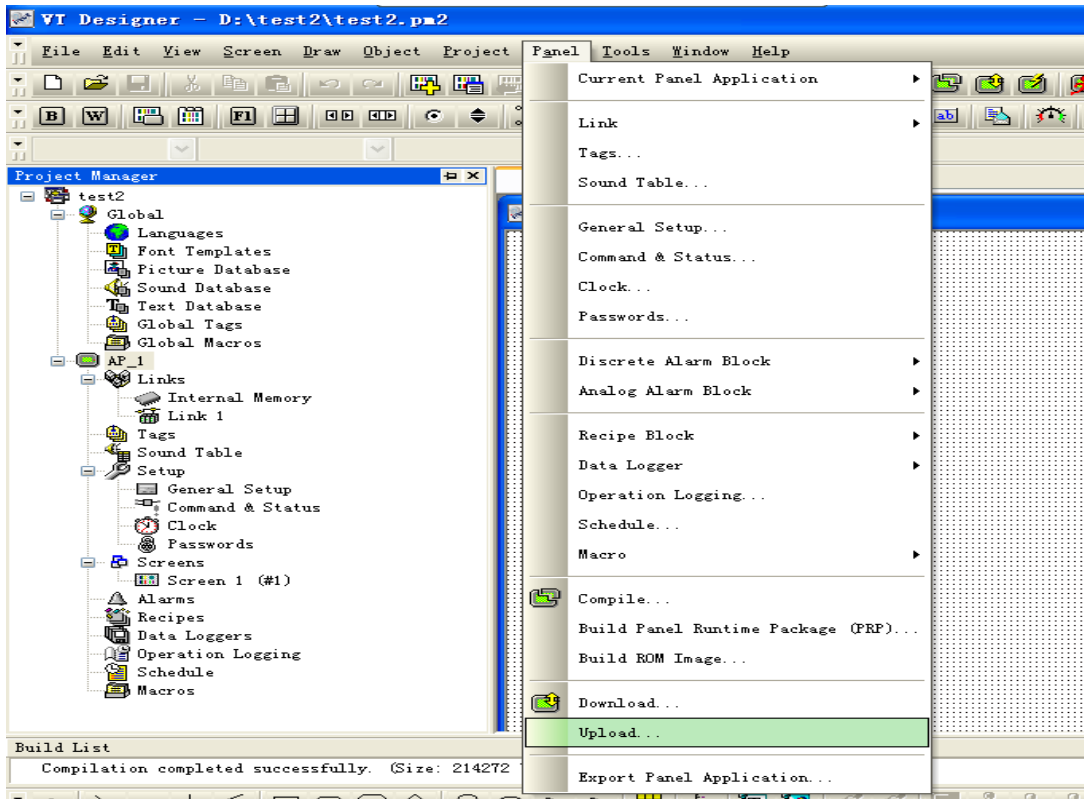
12. Select the Configuration and USB options. Click start.



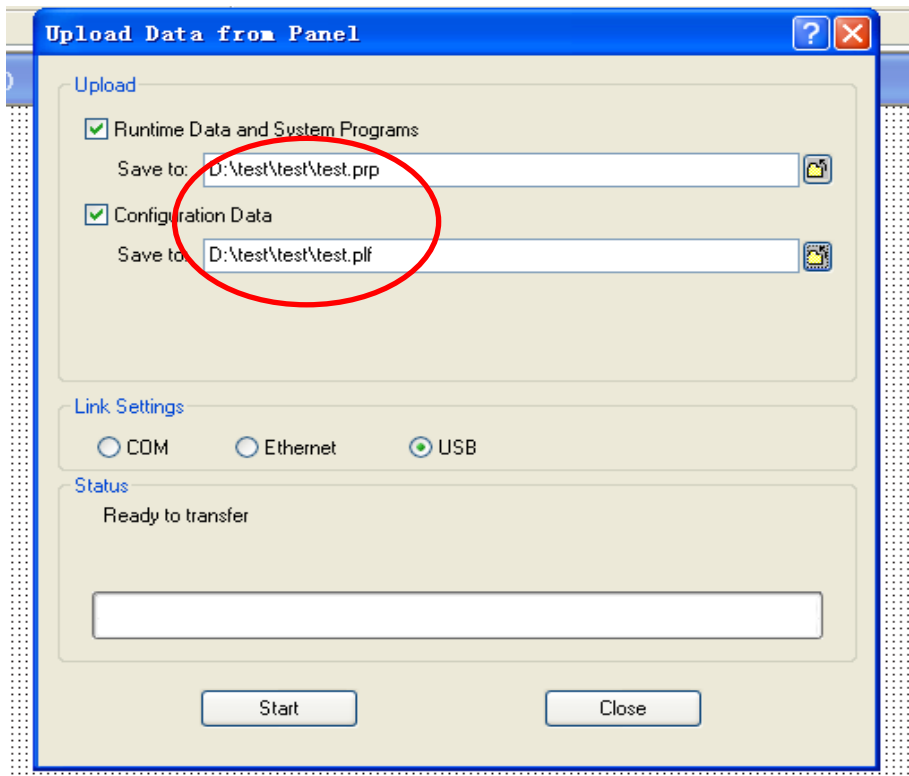
13. Then the download finished.



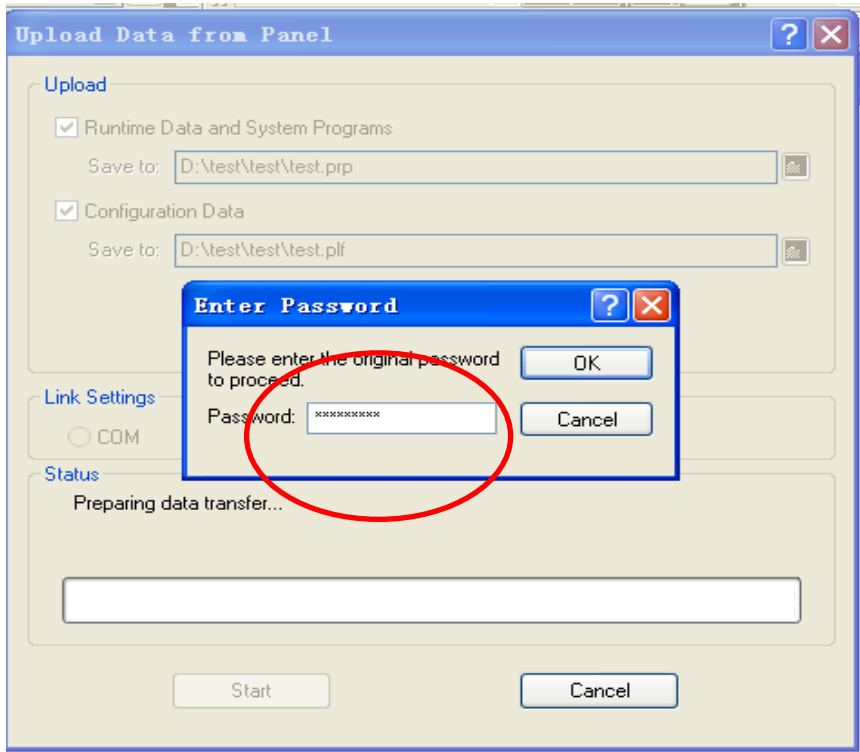
14. Click the panel upload button.



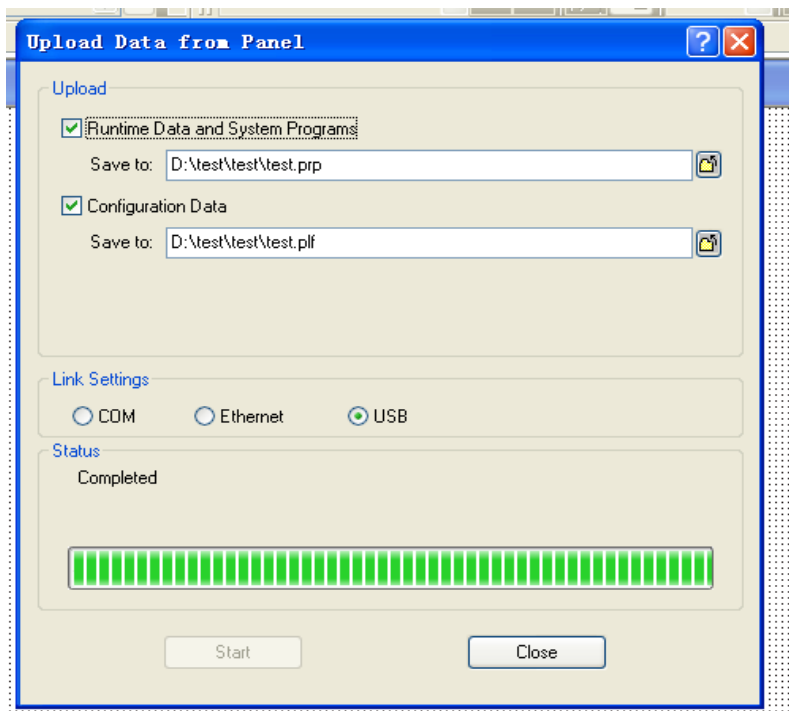
15. Fill the file name and save path in the disk. Click start.



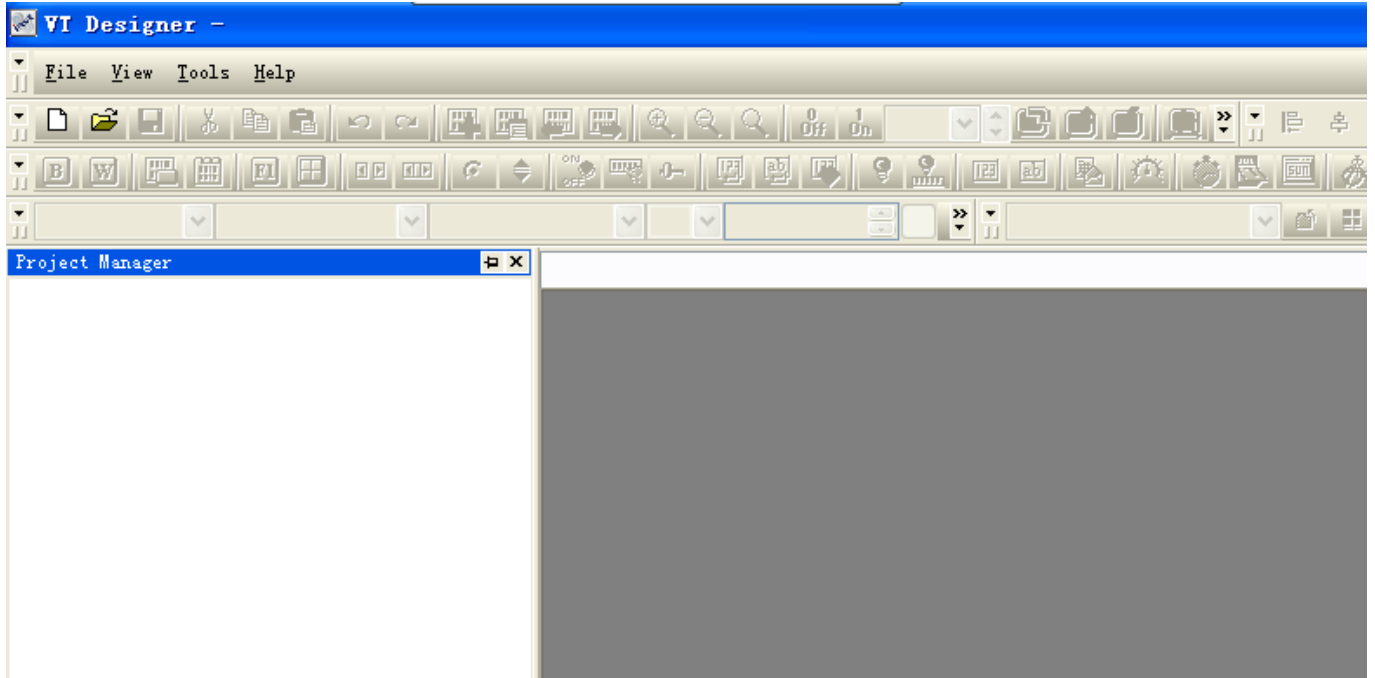
16. Fill the password. The default password is 00000000, 9 zero. Click ok.



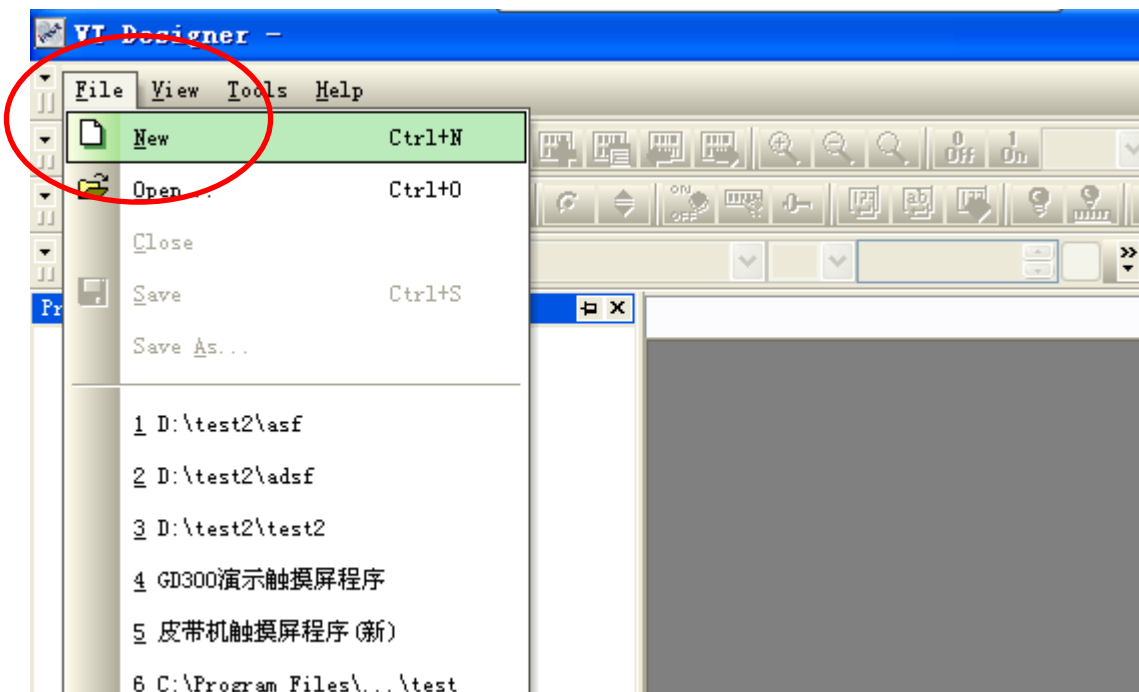
17. Then the upload finished.



18. If you want edit the upload file. Please follow the step: Open the VT Designer.



19. Found a new file.



20. Fill the file name and save path in the disk. Click next.

New Project

Project: test2

Location: D:\test2

< 上一步 (P) 下一步 (N) > 取消 帮助

21. Fill the application according to your driver. Click next.

New Panel Application

Application: AP_1

Display: 7.0" ▾

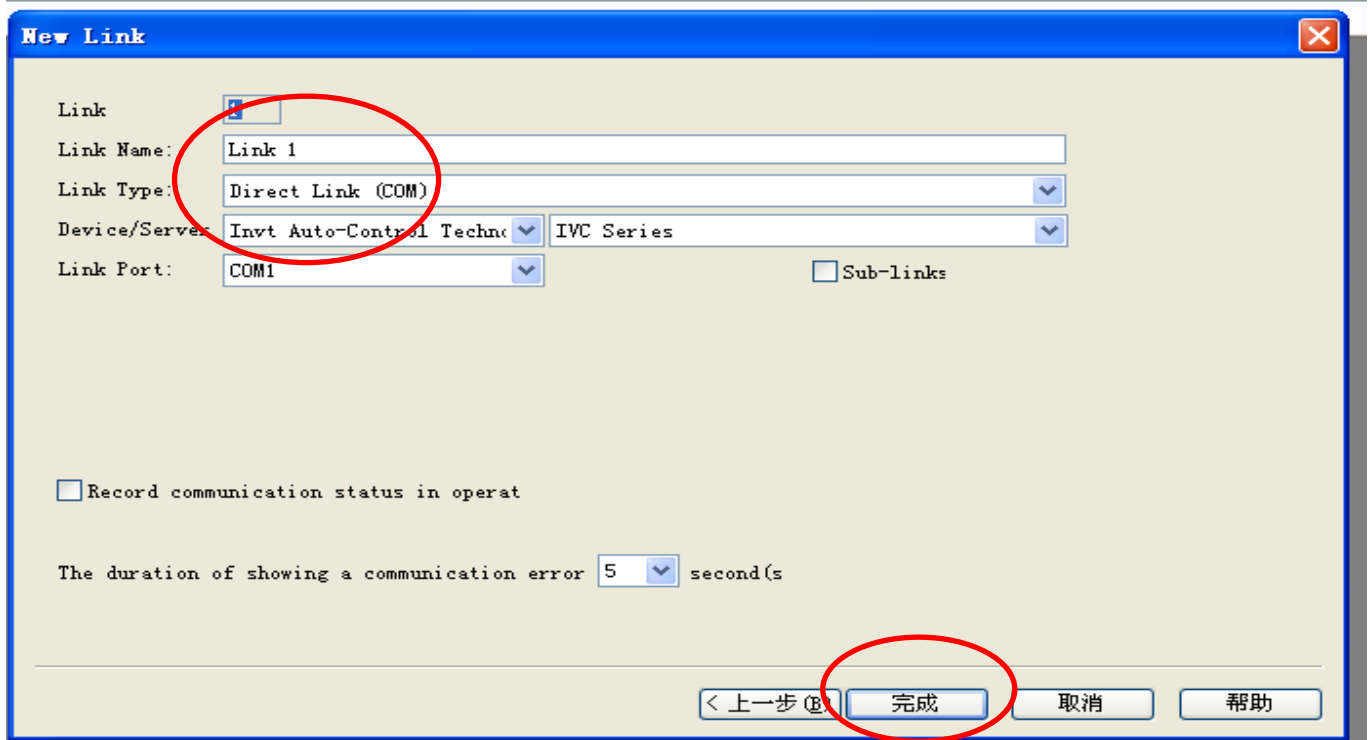
Display: Landscape ▾

Model: VT070 ▾

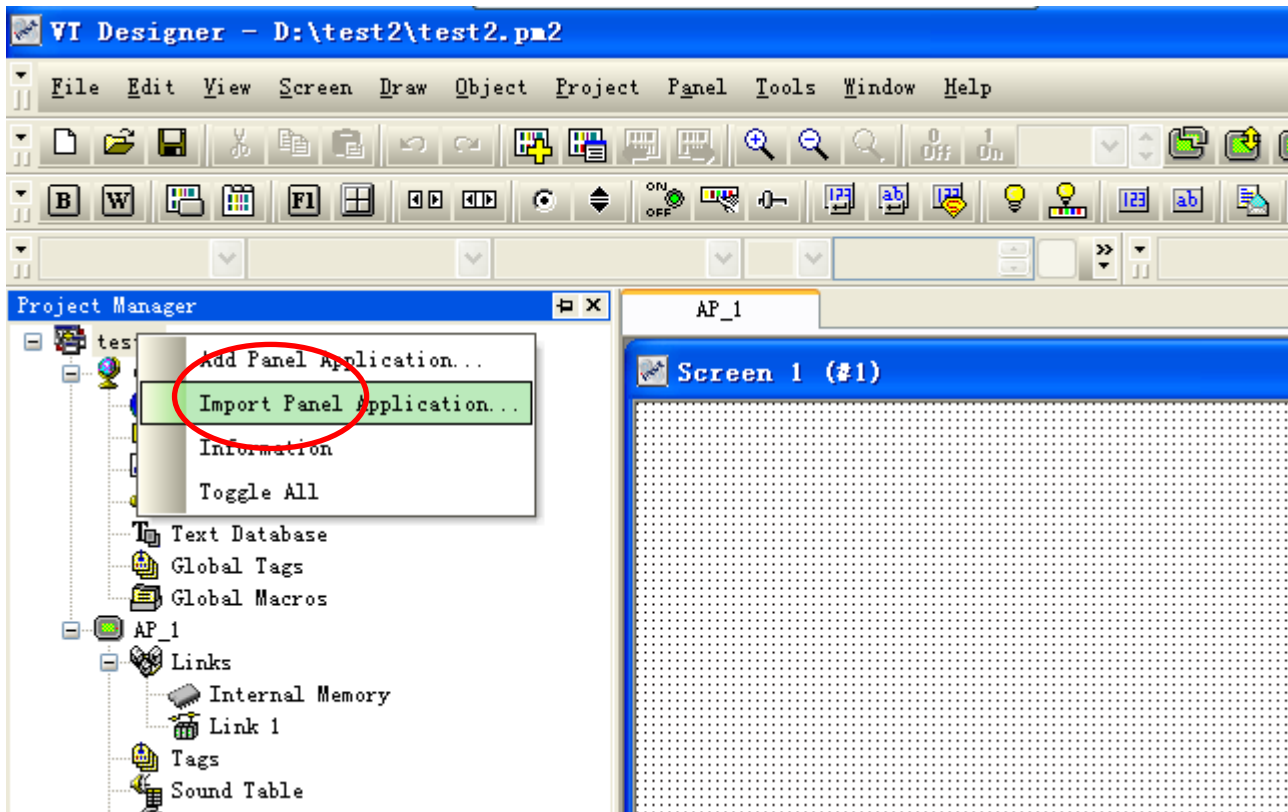
Display: 800 x 480

< 上一步 (P) 下一步 (N) > 取消 帮助

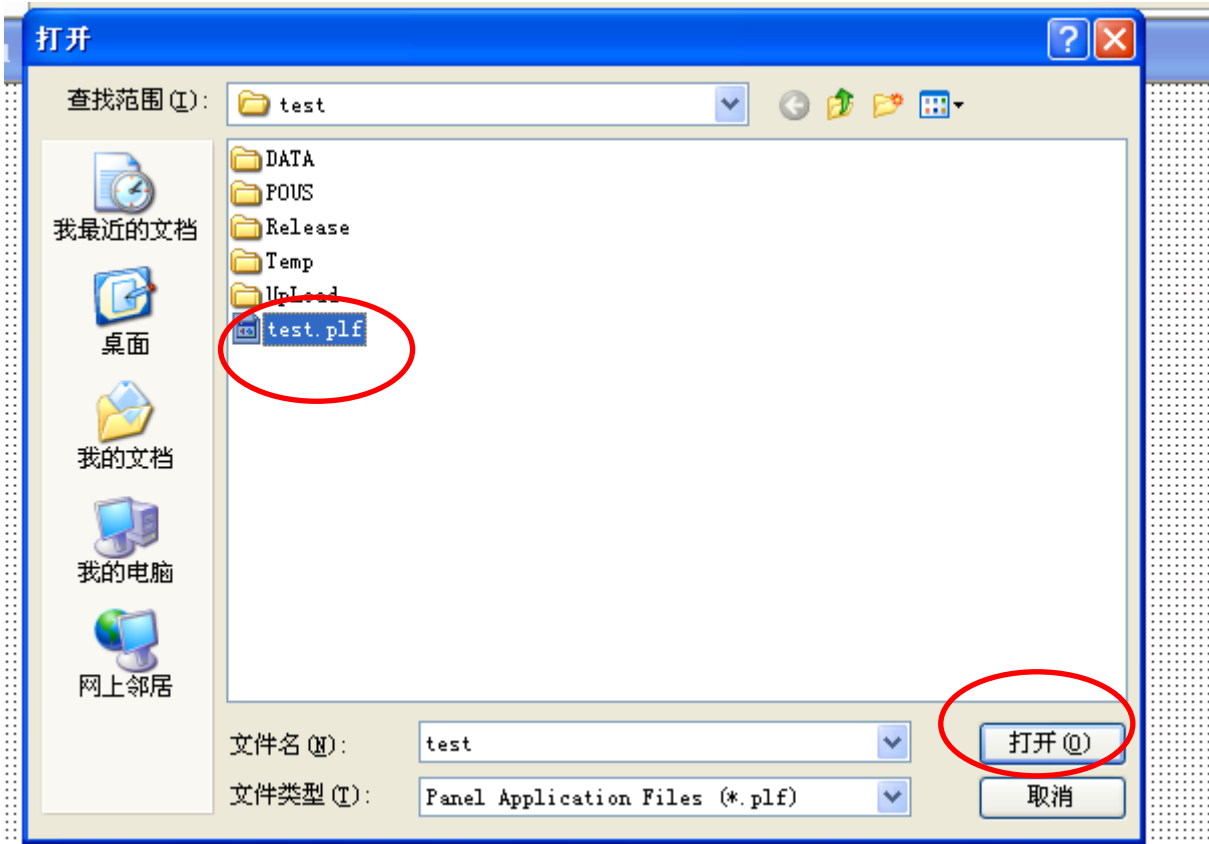
22. Fill the new link's details. Click finish.



23. On the new file test2 we just found right click the mouse select Import pane Application.



24. Select the file just upload and open it.



25. You will see the project you just upload form the HMI driver.

